

# Recommended Local Foods Guide

## Tonkotsu Ramen/豚骨ラーメン Pork soup ramen noodle

### Ippudo/一風堂



Open 10:00-22:00

Rate 700yen -

7 days a week

Location

Amu Plaza Hakata 10F, JR Hakata station

Google map

<http://bit.ly/1HRTjsW>

### Ichiran/一蘭



Open 10:00-22:00

Rate 800yen -

7 days a week

Location

JR Hakata Station BF2

Google map

<http://bit.ly/1HRTg0h>

### Isso/一双



Open 11:00-24:00

Rate 600yen -

Irregular holidays

Location

3-1-6Hakataekihigashi, Hakata-ku

Google map

<http://bit.ly/1YenPBc>

### Number one/ナンバーワン



Open 11:00-23:30

Rate 650yen -

7 days a week

Location

Hakata Daitos, JR Hakata station

Google map

<http://bit.ly/1Yeo3Z2>

### Daruma/だるま



Open 11:30-24:30

Rate 700yen -

7 days a week

Location

Hakata Daitos, JR Hakata station

Google map

<http://bit.ly/1YenLBr>

## Yakitori/焼き鳥 Grilled Chicken Skewered

### Nobunaga Honke/信長本家



Open 17 :00pm - 0 :00am

Location Hakataeki Chuo-gai45

Rate 2000yen – 3000yen

Google map

<http://bit.ly/1MAZ8b1>

### Hakata fu-do/博多風土



Open :17:00pm - 1 :00am

Location Hakataekihigashi 2-4-17

Rate 2000yen – 3000yen

Google map

<http://bit.ly/1MAZH4w>

### Muichimon/夢市門



Open 17 :00pm - 1 :00am

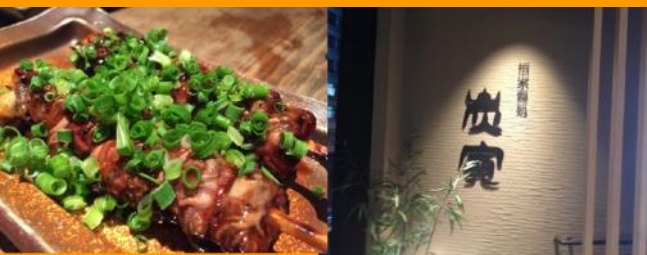
Location Hakataekimae 3-10-34

Rate 1500yen – 2500yen

Google map

<http://bit.ly/1Nb0b6S>

### Sumitora/炭寅



Open 17 :00pm - 0 :00am

Location Hakataekihigashi 2-7-27

Rate 3000yen – 4500yen

Google map

<http://bit.ly/1Nb0ZZD>

### Ieyasu 14shop/家康 14号店



Open 17 :00pm - 1 :00am

Location Hakataeki 2-5-1

Rate 2500yen – 3500yen

Google map

<http://bit.ly/1Nb1TFr>

# Sushi/寿司

## Hytansushi/ひょうたん寿司



Open :Lunch 11:30am - 2 :30pm  
Dinner Mon-Sat: 5:00pm-9:30pm  
Dinner Sun: 4:30pm-9:00pm  
Location next to Solariastage,Tenjin  
Rate: 1,000-3,000 Yen  
Google map <https://goo.gl/UlpF6B>

## Uobei/魚べい



Open :11:00am - 11 :00pm  
Location  
Yodobashi Camera Hakata 4F  
Rate: 1,000-2,000 Yen  
Google map  
<https://goo.gl/uXHDXp>

## Sushi shogun/すし将軍



Open :5:00pm - 5 :00am  
Location  
1-4 Nishinakasu  
Rate: 1,000-2,000 Yen  
Google map  
<https://goo.gl/szW16d>

## Sushi Yamanaka/鮨割烹 やま中



Open :11:00am - 3 :00pm,  
5:00pm-11:00pm  
Location JR Hakata station 9F  
Rate: 2,500-5,000 Yen  
Google map <https://goo.gl/zGrt1j>

## Hakataugogashi/博多魚がし



Open :10:00am - 10 :00pm,  
Location Hakata 1 bangai  
Rate: 1,000-3,000 Yen  
Google map <https://goo.gl/uWheze>

## Motsu Nabe/もつ鍋 Beef Innards Hot Pot

### Y am anaka/やま中



Open :5:00pm - 11 :00pm  
Location 2-6-27 Tenjin  
Rate: 1365yen~  
Google map  
<https://goo.gl/HAvDiy>

### Shoraku/笑楽



Open :11:00am - 11 :00pm  
Location Hakata station 10F  
Rate: 1180yen~  
Google map  
<https://goo.gl/bAmZT1>

### Rakutenchi/楽天地



Open :5:00pm - 0 :00am  
Location Hakataekihigashi 2-27  
Rate: 900yen~  
Google map  
<https://goo.gl/4djqcK>

### Ichifuji/一藤



Open :4:00pm - 1 :00am  
Location Chuo-ku Daimyo 2-6-4  
Rate: 1100yen~  
Google map  
<https://goo.gl/BCZheb>

### Ooyamaa/おおやま



Open :11:00am - 24 :00am  
Location Deitos, Hakata station  
Rate: 3000yen~  
Google map  
<https://goo.gl/d0fZOF>

## Mizutaki / 水炊き Chicken Wings Hot Pot

### Hanamidori / 華味鳥



Open 11:00-15:00, 17:00-22:30  
Rate 3000yen -  
Irregular holidays  
Location  
1-13-31 Hakataekihigashi, Hakata-ku  
Google map  
<http://bit.ly/1MjHvhR>

### Torizentei / 鳥ZEN停



Open 11:30am - 2:30pm, 5:30pm - 24:00  
Rate 3000yen -  
Location  
Near by Yodobashi camera Hakata  
Google map  
<https://goo.gl/45X6oA>

## Tenpura / 天ぷら deep-fried seafood and vegetables

### Tenpura hirao / 天ぷらひらお



Open :10:30am - 9:00pm  
Location 2-6-27 Tenjin  
Rate: 800-1,000 Yen  
Google map  
<https://goo.gl/JkXrnl>

### Tenpura daruma / 天ぷらだるま



Open :11:00am - 9:00pm  
Location  
1-2-15 Daimyo, chuo-ku  
Rate: 800-1,000 Yen  
Google map  
<https://goo.gl/ThkXNv>

### Tendon Tenya / 天丼てんや



Open :11:00am - 11:00pm  
Location 2-3-10 Tenjin  
Rate: 500-800 Yen  
Google map  
<https://goo.gl/hWzZTy>

## Hakata Gyoza/博多餃子 pan-fried dumplings

### Tetsunabe/鉄なべ



Open :5:00pm - 12 :00am  
(Sunday close)

Location from Gion station Exit 5  
Walk 3min

Rate: 1,000 -2,000 Yen

Google map <https://goo.gl/apmZcv>

### Temujin/テムジン



Open :11:00am - 12 :00am

Location JR hakata station 10F

Rate: 1,000 -1,500 Yen

Google map

<https://goo.gl/FkjQmZ>

### Hakatagyozaya 603/博多餃子舎603



Open :5:00pm - 1 :00am

Location 2-4-7 hakataekihigashi

Rate: 3,000 Yen

Google map

<https://goo.gl/B2LM6W>

### Sashimi/Sea food/刺身、海鮮

### Teppei/てっ平



Open :Mon-Fri 11:00am - 24 :00am

Sat 5:00 pm-24:00 am(Sunday close)

Location 3-23-12 hakataekimae

Rate: 3,000 Yen

Google map <https://goo.gl/8QxT9G>

### Sea fu-do/海風土



Open :5:00pm - 1 :00am

Location

2-4-17 hakataekihigashi

Rate: From 3,000 Yen

Google map

<http://bit.ly/1MOBiZt>